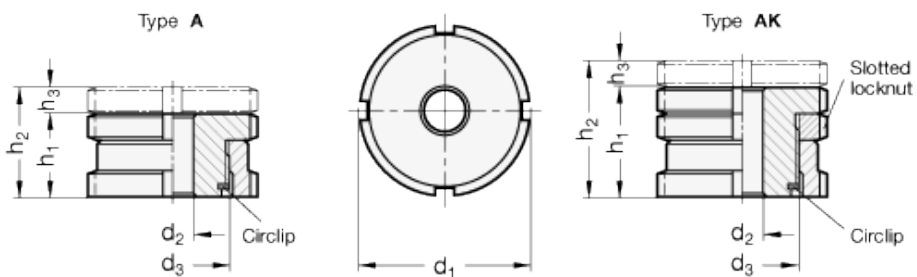


# GN 350.1-NI

Levelling sets



INOX  
Stainless Steel



## technical informations

### Material

AISI 303 stainless steel.

$F_1$ : max. total load.

$F_2$ : max. load after deduction of the max. preload for screws 6.8,  $\mu = 0,14$ .

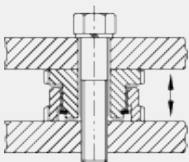
### Standard versions available

- Version A: without locknut.
- Version AK: with lock nut.

### Features and applications

Levelling sets GN 350.1 are used for levelling, adjusting and linking operations if small dimensions are given. They comprise a threaded upper sleeve and a female threaded lower sleeve. The fine thread allows a stepless and precise setting and locking using the C-Spanner DIN 1810. A locking ring serves as a height limiter for the max. height.

### Application example



Accessoires on request

C-Spanner DIN 1810 (see table).

Standard Elements	Main dimensions						for screw	Static load		C-Spanner	Weight
	Description	d <sub>1</sub>	d <sub>2</sub>	d <sub>3</sub>	h <sub>1</sub>	h <sub>2</sub>		h <sub>3</sub>	F <sub>1</sub>		F <sub>2</sub>
GN 350.1-25-5.5-A-NI	25	5.5	M15x1	15	19	4	M5	27.1	22.4	DIN 1810-A25-28	45
GN 350.1-25-6.6-A-NI	25	6.6	M15x1	15	19	4	M6	27.1	20.2	DIN 1810-A25-28	43
GN 350.1-32-6.6-A-NI	32	6.6	M20x1	18	23	5	M6	43.4	36.5	DIN 1810-A30-32	93
GN 350.1-32-9-A-NI	32	9	M20x1	18	23	5	M8	43.4	30.8	DIN 1810-A30-32	87
GN 350.1-32-11-A-NI	32	11	M20x1	18	23	5	M10	43.4	23.4	DIN 1810-A30-32	83
GN 350.1-45-11-A-NI	45	11	M30x1.5	22	29	7	M10	84	64	DIN 1810-A45-50	216
GN 350.1-45-13.5-A-NI	45	13.5	M30x1.5	22	29	7	M12	84	54.8	DIN 1810-A45-50	207
GN 350.1-45-17.5-A-NI	45	17.5	M30x1.5	22	29	7	M16	84	28.9	DIN 1810-A45-50	188
GN 350.1-58-17.5-A-NI	58	17.5	M40x1.5	28	37	9	M16	148	92.9	DIN 1810-A58-62	450
GN 350.1-58-22-A-NI	58	22	M40x1.5	28	37	9	M20	148	59	DIN 1810-A58-62	418
GN 350.1-58-26-A-NI	58	26	M40x1.5	28	37	9	M24	148	20.3	DIN 1810-A58-62	386
GN 350.1-70-22-A-NI	70	22	M50x1.5	33	43	10	M20	225	136	DIN 1810-A68-75	788
GN 350.1-70-26-A-NI	70	26	M50x1.5	33	43	10	M24	225	97.3	DIN 1810-A68-75	744
GN 350.1-70-33-A-NI	70	33	M50x1.5	33	43	10	M30	225	20.6	DIN 1810-A68-75	668
GN 350.1-80-26-A-NI	80	26	M60x2	38	50	12	M24	323	195.3	DIN 1810-A80-90	1135
GN 350.1-80-33-A-NI	80	33	M60x2	38	50	12	M30	323	118.6	DIN 1810-A80-90	1060
GN 350.1-80-39-A-NI	80	39	M60x2	38	50	12	M36	323	38.2	DIN 1810-A80-90	965
GN 350.1-25-5.5-AK-NI	25	5.5	M15x1	20	24	4	M5	27.1	22.4	DIN 1810-A25-28	61
GN 350.1-25-6.6-AK-NI	25	6.6	M15x1	20	24	4	M6	27.1	20.2	DIN 1810-A25-28	59
GN 350.1-32-6.6-AK-NI	32	6.6	M20x1	24	29	5	M6	43.4	36.5	DIN 1810-A30-32	128
GN 350.1-32-9-AK-NI	32	9	M20x1	24	29	5	M8	43.4	30.8	DIN 1810-A30-32	119
GN 350.1-32-11-AK-NI	32	11	M20x1	24	29	5	M10	43.4	23.4	DIN 1810-A30-32	114
GN 350.1-45-11-AK-NI	45	11	M30x1.5	29	36	7	M10	84	64	DIN 1810-A45-50	320
GN 350.1-45-13.5-AK-NI	45	13.5	M30x1.5	29	36	7	M12	84	54.8	DIN 1810-A45-50	209
GN 350.1-45-17.5-AK-NI	45	17.5	M30x1.5	29	36	7	M16	84	28.9	DIN 1810-A45-50	289
GN 350.1-58-17.5-AK-NI	58	17.5	M40x1.5	37	46	9	M16	148	92.9	DIN 1810-A58-62	665
GN 350.1-58-22-AK-NI	58	22	M40x1.5	37	46	9	M20	148	59	DIN 1810-A58-62	618
GN 350.1-58-26-AK-NI	58	26	M40x1.5	37	46	9	M24	148	20.3	DIN 1810-A58-62	574
GN 350.1-70-22-AK-NI	70	22	M50x1.5	44	54	10	M20	225	136	DIN 1810-A68-75	1123
GN 350.1-70-26-AK-NI	70	26	M50x1.5	44	54	10	M24	225	97.3	DIN 1810-A68-75	1069
GN 350.1-70-33-AK-NI	70	33	M50x1.5	44	54	10	M30	225	20.6	DIN 1810-A68-75	756
GN 350.1-80-26-AK-NI	80	26	M60x2	49	61	12	M24	323	195.3	DIN 1810-A80-90	1565
GN 350.1-80-33-AK-NI	80	33	M60x2	49	61	12	M30	323	118.6	DIN 1810-A80-90	1440
GN 350.1-80-39-AK-NI	80	39	M60x2	49	61	12	M36	323	38.2	DIN 1810-A80-90	1310

